



**ACLUDE  
FOUNDATION**

ACTION TOWARDS INCLUSIVE EQUALITY



## WHO WE ARE

What started in 2018 was a DREAM to make the world a better place. Aclude Foundation focuses on Infrastructure Accessibility and Inclusion. Our prime focus is in making infrastructure and all other services accessible for all users without any barriers. Aclude stands for equality and justice for all.



WE WORK  
TOWARDS  
FURTHERING  
THE **RIGHTS OF  
PERSONS WITH  
DISABILITIES**  
THROUGH  
ADVOCACY  
AND ACTION  
IN **FOSTERING  
INCLUSIVE  
EQUALITY.**





# WHAT WE DO

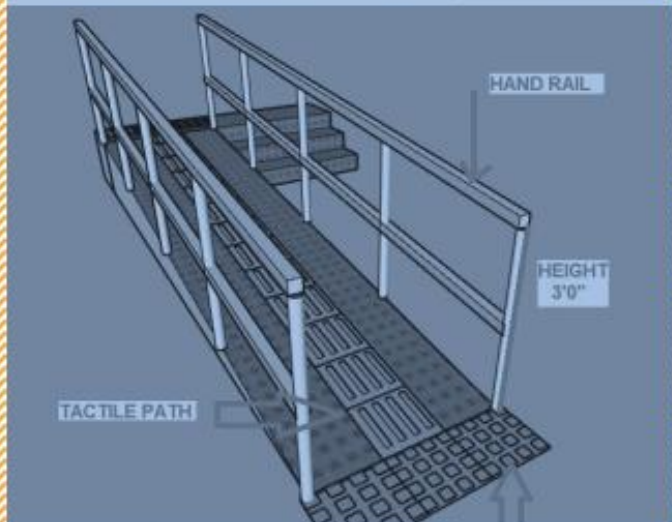
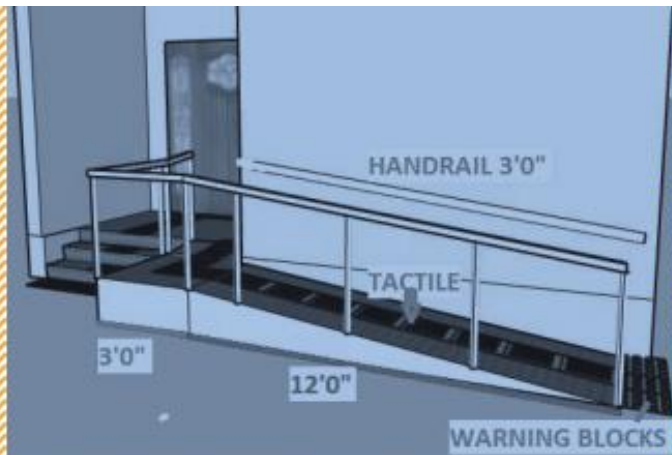
INFRASTRUCTURE  
ACCESSIBILITY AUDITING  
AND CONSULTATION

SUPPORT IN JOBS,  
COUNSELLING AND  
ENTREPRENEURSHIP  
OPPORTUNITIES

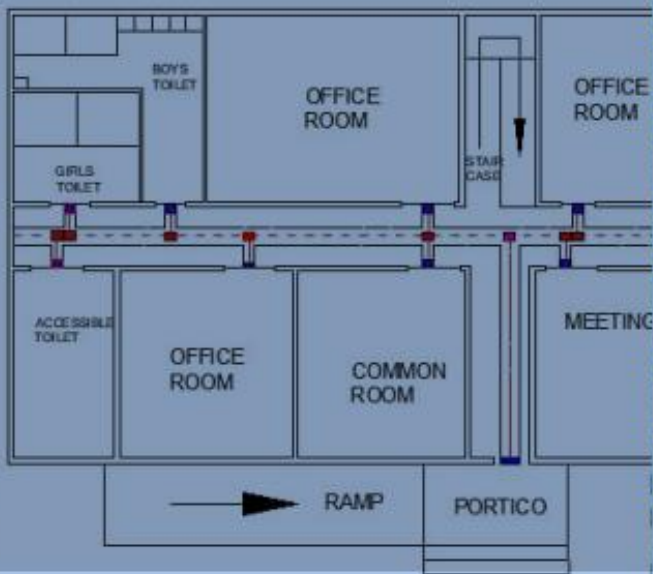
DISABILITY ETIQUETTE  
TRAINING AND SENSITIZATION

SUPPORTING SOCIAL SECTOR  
ORGANIZATIONS WITH  
WRITING AND RESEARCH

PHILANTHROPIC ACTIVITIES



**DISTRICT DISABILITY OFFICE**  
(INSIDE OF THE BUILDING)





# OUR PROJECTS

**1** Aclude Foundation is a Government Empanelled Infrastructure Accessibility Auditing and Implementation Agency.

**2** Government of Tamil Nadu Successfully conducted Accessibility Audit in 70 Government Buildings (Taluka Office, Block Development Office and Tourist Places) in districts of Ramanathapuram, Tirunelveli and Theni under State Commissionerate for Persons with Disability and Welfare of the Differently Abled.

**3** Government of Maharashtra Successfully conducted Accessibility Audit in 2 Government Buildings (etc Vashi & etc Airoli) of Navi Mumbai Municipal Corporation

**4** Government of Andhra Pradesh Served as Accessibility Consultant for Andhra Pradesh Accessibility Study 2019 under School of Public Policy and Governance (SPPG), Tata Institute of Social Sciences, Hyderabad and Institute of Leadership Excellence and Governance (ILEG), Andhra Pradesh State Development Planning Society, Government of Andhra Pradesh

**5** Strategic Partnerships with 5 Civil Engineering and Architectural Colleges.

**6** Facilitated multiple sessions on Infrastructure Accessibility and Universal Design







**7** Conducted 2 job fairs. Generating 13 job opportunities for persons with disabilities.

**8** Donated two - 3 wheeler Scooters and a Prosthetic leg made of lightweight metals such as titanium and aluminum.

**9** Presented and Published paper on Infrastructure Accessibility in National Conference on Disability, Accessibility, Inclusion and Well-being 2019.



**10** Conducted training and sensitization sessions in  
a. Pillais College of Architecture on Infrastructure accessibility and Universal design for students and professors.

b. We conducted a training session to educate Architects, Builders, Civil Contractors, individuals and boost public awareness about disabilities and accessibility guidelines. Event was sponsored by M/s Anubhav Properties.

c. Delivered a session for Air Asia Airlines on Disability etiquettes and Passengers handling in collaboration with Helen Keller Institute, Mumbai.



## PARTNERSHIPS



ITM College of  
Management,  
Kharghar



Pillai's College  
of Architecture,  
Parvel



Lakshmi  
Narayan  
Construction



Anubhav  
Properties



Nadar Saraswathi  
College Of  
Engineering And  
Technology, TN



# FUTURE & VISION

## VISION 2022

To start a Special school for children with intellectual disabilities

To conduct disability training and sensitisation programs in corporations.

## VISION 2023

To start a residential facility for children and adults with disabilities

To start Skill development center for all kinds of disabilities

Start an APP for Infrastructure Accessibility.



Anna University  
College of  
Engineering Regional  
Campus, Tirunelveli

### CONTACT

1/56 Middle Street. Keela Vilathikulam, Vilathikulam (Taluk),  
Tuticorin (Dist), Tamil Nadu, Pin code-628907.

Corporate Office  
CH3-26, Kendra Vihar, Sector 11, Kharghar,  
Navi Mumbai 410210.

Website: [www.aclufoundation.org](http://www.aclufoundation.org)  
Phone: +91 96000 81828

### How can YOU support

Volunteer

Fundraise

Donate

Refer a Corporate  
for CSR Funds